



# integre pro scan™

The pattern scanning  
multi-color photocoagulator  
that puts you in control

RETINAL PHOTOCOAGULATION

---

LASER TRABECULOPLASTY

---

LASER IRIDOTOMY

---

# Transforming retinal photocoagulation — effectively, efficiently

With Integre Pro Scan™ from Ellex, you can transform the efficacy and efficiency of retinal photocoagulation. At the touch of a button, the system can deploy a comprehensive choice of patterns that are spaced, shaped and positioned consistently and precisely for the accurate and efficient treatment of retinal disease.

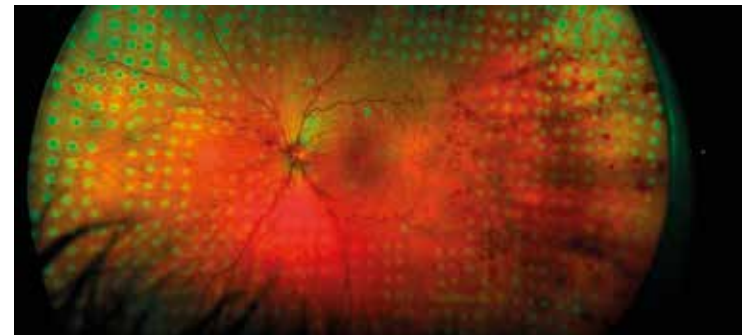
**Choose Integre Pro Scan™ and you'll be able to treat patients up to twice as quickly than is possible with conventional single-spot photocoagulation.**

integre **pro scan**.

## **Uniform energy distribution**

Integre Pro Scan's proprietary dual-mode laser cavity delivers uniform energy distribution across the full spot diameter, eliminating hotspots and achieving optimal, homogenous burns.

It's a key feature that means you can achieve consistent, predictable treatment outcomes across a broad range of pathologies.



Integre Pro Scan™ delivers uniform energy distribution

*Image provided by Dmitri Yellachich, MD (Australia)*



integrepro  
scan



ellex

# A pattern and wavelength for every pathology

Integre Pro Scan™ from Ellex combines multi-color photocoagulation with a precise computer-controlled pattern scanning laser in an ergonomically advanced all-in-one laser/slit lamp design.

**Whether positioning focal treatment in the macular area, or performing PRP in the periphery, Integre Pro Scan™ provides a comprehensive pattern and wavelength choice to cover all retinal pathologies.**

With Integre Pro Scan™, the following wavelength configurations are available:



YELLOW-RED CONFIGURATION (561 nm and 670 nm)



GREEN-RED CONFIGURATION (532 nm and 670 nm)

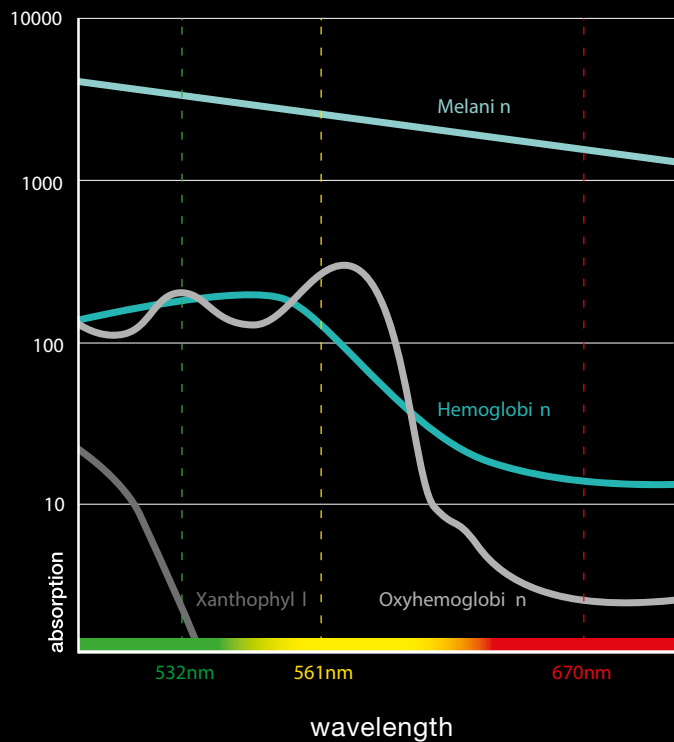


GREEN CONFIGURATION (532 nm)



YELLOW CONFIGURATION (561 nm)

## Wavelength Clinical Characteristics



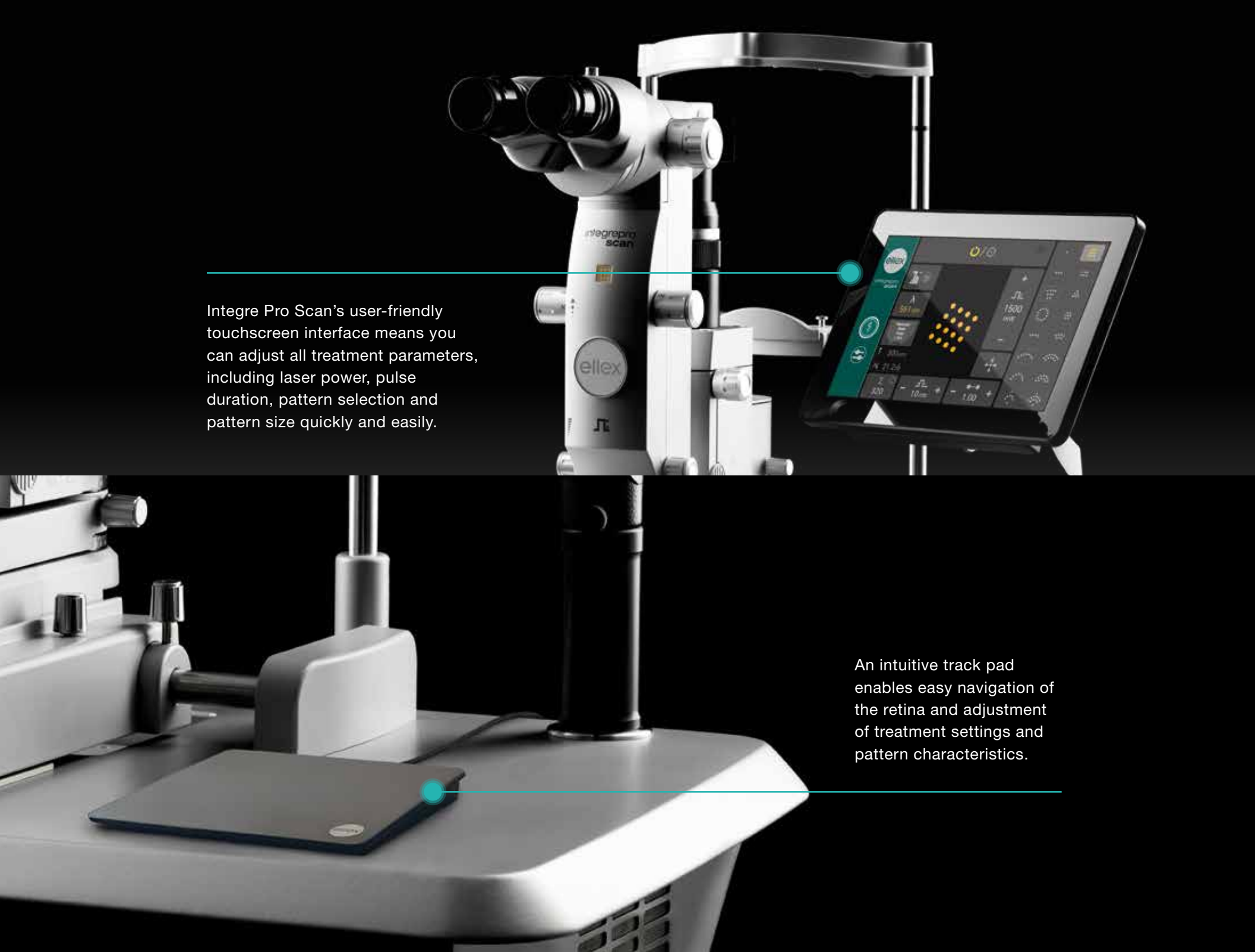
## True Spot Optics

Integre Pro Scan's enhanced True Spot™ optical system gives you a clearer view of the fundus. It's a system that delivers excellent visualization and illumination, alongside enhanced depth perception and a wider peripheral view.

When it's combined with an optimal red-reflex, it's also a solution that enables you to titrate power levels precisely to deliver highly accurate treatment.


# Specifications

<b>Laser Source</b>	Solid-state laser diode and cavity	<b>Spot Size</b>	Pattern: 100 to 500 $\mu\text{m}$ , continuously variable Single Spot: 50 to 1000 $\mu\text{m}$ , continuously variable
<b>Wavelength</b>	1 Yellow-red configuration: 561 nm and 670 nm 2 Green-red configuration: 532 nm and 670 nm 3 Yellow configuration: 561 nm 4 Green configuration: 532 nm	<b>Spot Spacing</b>	Pattern: 0 (touching), 0.25, 0.5, 0.75, 1.0, 1.25, 1.5, 1.75, 2.0 spot-width Single Spot: N/A
<b>Power at the Cornea</b>	Red: 50 – 1000 mW, Yellow: 50 – 1500 mW, Green: 50– 1500 mW	<b>Pulse duration</b>	Pattern: 10, 20, 30 ms Single Spot: 10 – 8000 ms
<b>Exposure Time</b>	Pattern: 10, 20, 30, Single Spot: 0.01 to 8.0 seconds	<b>Repeat Mode</b>	Pattern: N/A, Single Spot: 50 – 1000 ms
<b>Patterns</b>	Linear (2 to 7 spots) Rectangle (2x3, 2x4, 2x5, 2x6, 2x7) Square (2x2, 3x3, 4x4, 5x5, 6x6) Triangle (3, 6, 10, 15, 21 and 28 spots) Circle – filled (7, 12, 19, 27 and 37 spots) Circle – empty (12, 18, 24 and 30 spots) Single Half Circle (4, 7 and 10 spots) Double Half Circle (11, 17 and 23 spots) Circle Sector 60 (3 to 7 spots) Circle Sector 120 (5, 7, 9 and 11 spots) Double Circle Sector 60 (5, 7, 9 and 11 spots) Double Circle Sector 120 (8, 12, 16 and 20 spots) Variable curve, double curve and filled sector	<b>Aiming Beam</b>	Red 635 nm, adjustable intensity
		<b>Magnification</b>	6x, 10x, 16x, 25x, 40x
		<b>Cooling</b>	Air cooled
		<b>Electrical Requirements</b>	100-240 VAC, 50/60 Hz, 800 VA
		<b>Weight</b>	35kg, 77 lbs. (laser only)
		<b>Dimensions (HxWxD)</b>	62 x 76 x 47 cm, 24 x 30 x 19 inches (laser only)



The image shows a white and black laser system, the Integre Pro Scan, mounted on a stand. It features a binocular eyepiece at the top and a tablet mounted on the side. The tablet displays a control interface with various settings and a central grid of yellow dots. The brand name 'ellex' is visible on the front of the device. A teal line with a dot points from the text to the tablet.

Integre Pro Scan's user-friendly touchscreen interface means you can adjust all treatment parameters, including laser power, pulse duration, pattern selection and pattern size quickly and easily.



A close-up view of the base of the laser system, showing a grey track pad on a white surface. A teal line with a dot points from the text to the track pad.

An intuitive track pad enables easy navigation of the retina and adjustment of treatment settings and pattern characteristics.

# integre pro scan™



Find out how Integre Pro Scan™ will help you set new standards in deploying laser photocoagulation in the treatment of retinal disease.

## Contact us now to schedule a demonstration

### Ellex Medical Pty Ltd

3 Second Avenue  
Mawson Lakes, SA, 5095 AUSTRALIA  
+61 8 7074 8200

### Ellex Inc. (USA)

7138 Shady Oak Road  
Minneapolis, MN, 55344 USA  
800 824 7444

### Ellex Inc. (Japan)

Harumi Center Bldg 5F, 2-5-24  
Harumi Chuo-ku  
Tokyo 104-0053 JAPAN

### Ellex France SARL

La Chaufferie – 555 chemin  
du bois  
69140 Rillieux la Pape  
+81 3 5859 0470

Helping the world see clearly



### PREMED PHARMA KFT.

cím 2040 Budaörs, Gyár u. 2.

TELEFON 06 23 889 700

FAX 06 23 889 710

E-MAIL [info@premedpharma.hu](mailto:info@premedpharma.hu)

WEB [www.premedpharma.hu](http://www.premedpharma.hu)

© 2020, Ellex Medical Pty Ltd. Integre Pro Scan, True Spot, Total Solution and Power Control are trademarks of Ellex Medical Pty Ltd. Ellex is a registered trademark of Ellex Medical Pty Ltd. International patents pending and/or granted. 8448323EN-01

Integre Pro Scan™ has a CE Mark (Conformité Européenne) and US Food and Drug Administration (FDA) 510(k) Market release for the indications of Retinal Photocoagulation, Laser Trabeculoplasty and Laser Iridotomy.

