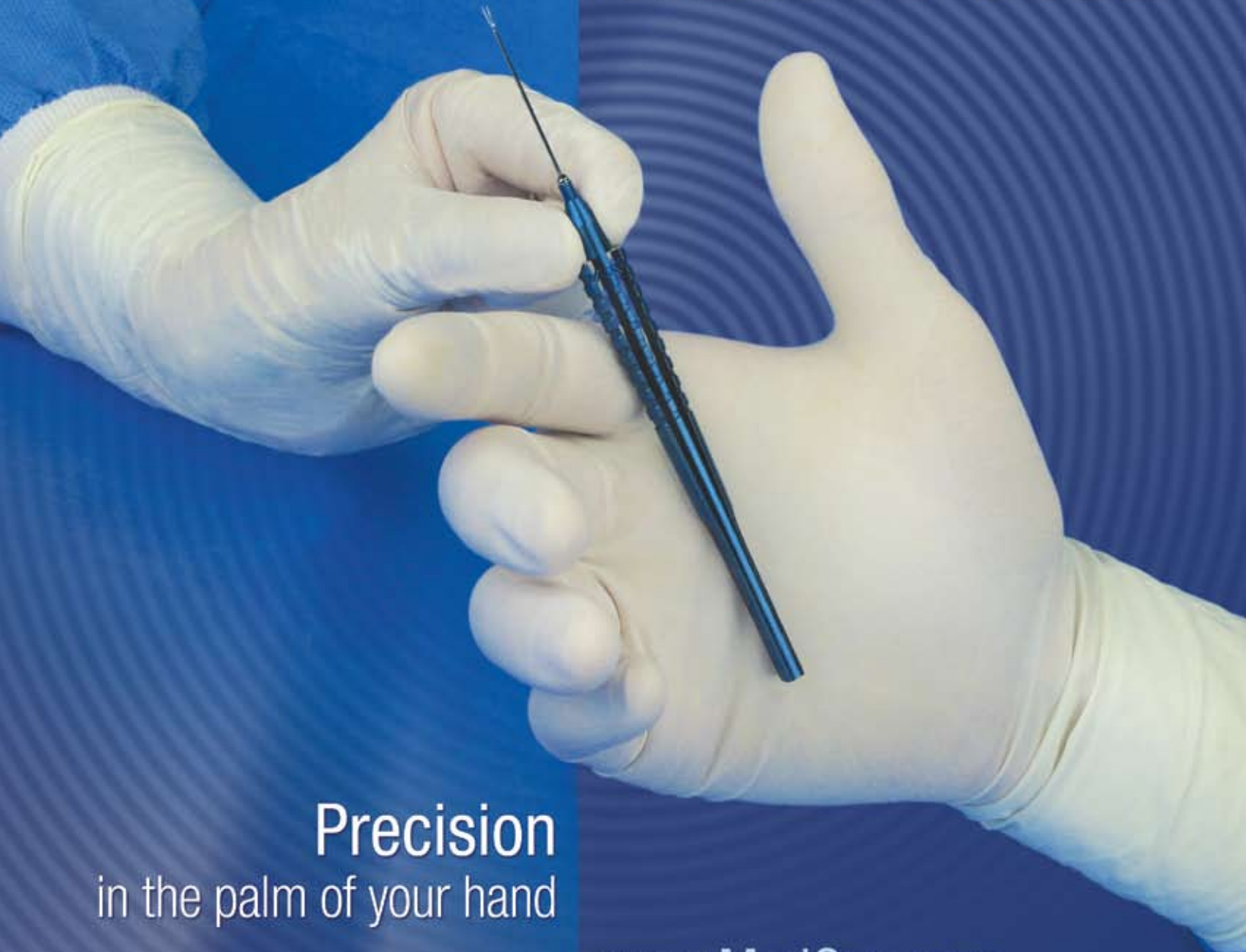




**MedOne<sup>®</sup>**

HIGH PRECISION RETINA INSTRUMENTS



**Precision**  
in the palm of your hand

[www.MedOne.com](http://www.MedOne.com)

# HIGH PRECISION INSTRUMENTS

*for High Precision Surgery*

Vitreoretinal surgery demands the highest level of precision to achieve the best results.

**Get the high precision instruments you need from MedOne.**

Manufactured in England by Eye Technology Limited, these instruments combine the best materials and precise manufacturing standards to provide the instruments needed to achieve your surgical goals.



## INSTRUMENTS DESIGNED *With You In Mind*



- Lightweight titanium squeeze handle for optimum comfort and durability.
- Rounded grip area enables easy rotation during use for optimal positioning.
- Smooth squeeze mechanism for high precision surgery.
- Forceps and scissors have stationary distal tips to eliminate any unintended movement of the jaws during actuation.
- Full range of 20, 23 and 25 gauge instruments for every surgical application. All 23 and 25 gauge instruments are trocar system compatible.



# Micro Scissors

- |             |                                |                   |                            |
|-------------|--------------------------------|-------------------|----------------------------|
| <b>1010</b> | <b>Vertical Scissors (90°)</b> | <b>.9mm (20g)</b> | <b>1.9mm blade length</b>  |
| <b>1014</b> | <b>Vertical Scissors (45°)</b> | <b>.9mm (20g)</b> | <b>1.75mm blade length</b> |
| <b>1514</b> | <b>Vertical Scissors (45°)</b> | <b>.6mm (23g)</b> | <b>.6mm blade length</b>   |
| <b>1814</b> | <b>Vertical Scissors (45°)</b> | <b>.5mm (25g)</b> | <b>.5mm blade length</b>   |

Sharp tip vertical style scissors. Distal blade remains stationary during use for extremely precise control while cutting.  
23 & 25g instruments compatible with trocar systems.

- |             |                          |                   |                            |
|-------------|--------------------------|-------------------|----------------------------|
| <b>1011</b> | <b>Straight Scissors</b> | <b>.9mm (20g)</b> | <b>3mm blade length</b>    |
| <b>1511</b> | <b>Straight Scissors</b> | <b>.6mm (23g)</b> | <b>3mm blade length</b>    |
| <b>1811</b> | <b>Straight Scissors</b> | <b>.5mm (25g)</b> | <b>1.25mm blade length</b> |

- |             |                               |                   |                            |
|-------------|-------------------------------|-------------------|----------------------------|
| <b>1012</b> | <b>Curved Scissors</b>        | <b>.9mm (20g)</b> | <b>3mm blade length</b>    |
| <b>1512</b> | <b>Curved Scissors</b>        | <b>.6mm (23g)</b> | <b>1.25mm blade length</b> |
| <b>1513</b> | <b>Curved Scissors (long)</b> | <b>.6mm (23g)</b> | <b>2.25mm blade length</b> |
| <b>1812</b> | <b>Curved Scissors</b>        | <b>.5mm (25g)</b> | <b>1.25mm blade length</b> |
| <b>1813</b> | <b>Curved Scissors (long)</b> | <b>.5mm (25g)</b> | <b>2.5mm blade length</b>  |

Sharp tip scissors with gentle curve to allow cutting along the curvature of the globe. 23 & 25g instruments compatible with trocar systems.

- |             |                                   |                   |  |
|-------------|-----------------------------------|-------------------|--|
| <b>1013</b> | <b>135 Degree Angled Scissors</b> | <b>.9mm (20g)</b> |  |
|-------------|-----------------------------------|-------------------|--|
- Sharp tip horizontal style scissors, angled 135 degrees 2mm from tip.

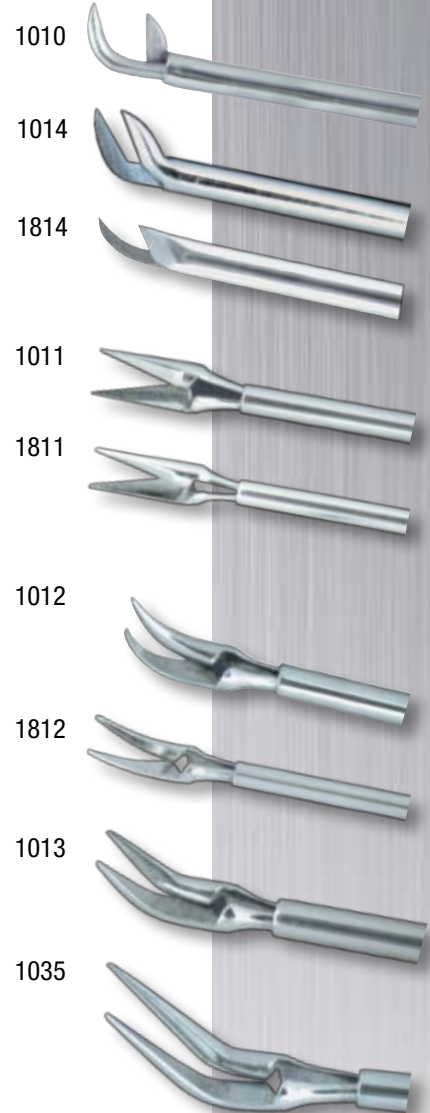
- |             |                             |                   |  |
|-------------|-----------------------------|-------------------|--|
| <b>1035</b> | <b>Long Angled Scissors</b> | <b>.9mm (20g)</b> |  |
|-------------|-----------------------------|-------------------|--|
- Sharp tip horizontal style scissors angled 135 degrees 3.5mm from the tip. Long thin blades for cutting adhesions in the subretinal space.

- |             |   |
|-------------|---|
| <b>4072</b> | <b>Sterilization Tray (2.5 x 7.5in)</b> |
|             | Holds 3 instruments                     |
| <b>4073</b> | <b>Sterilization Tray (4 x 7.5in)</b>   |
|             | Holds 5 instruments                     |

**Protect your investment!** Instruments can easily become damaged during reprocessing. Investing in a dedicated sterilization tray today can save repair expenses later. Trays will hold scissors or forceps, but not membrane instruments.



Photos not to scale



# Micro Forceps



1016

**1016 Micro End Gripping Forceps** .9mm (20g)



1516

**1516 Micro End Gripping Forceps** .6mm (23g)

**1816 Micro End Gripping Forceps** .5mm (25g)

Delicate, blunt tip forceps with tapered jaw and small gripping platform. Excellent for gripping and manipulating membranes.



1017

**1017 Side Gripping Forceps** .9mm (20g)

Thin, rounded, blunt vertical style forceps. Excellent for grasping along the surface of the retina.



1018

**1018 Angled Forceps** .9mm (20g)

Blunt tip forceps with small platform. Angled 135 degrees 2mm from tip. Angle allows gripping along the retina surface with good visualization.



1019

**1019 Pick Forceps** .9mm (20g)



1530

**1530 Pick Forceps** .6mm (23g)



1830

**1830 Pick Forceps** .5mm (25g)

Straight forceps with large gripping platform at tip. Small pick at tip for lifting and manipulating membranes. Platform allows excellent grip for delicate membranes.



1020

**1020 Serrated Forceps** .9mm (20g)



1520

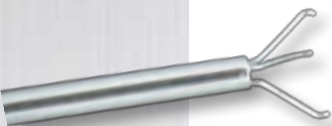
**1520 Serrated Forceps** .6mm (23g)



1820

**1820 Serrated Forceps** .5mm (25g)

Blunt tip serrated jaws for non-slip grip. Excellent for working with thicker, more fibrotic membranes.



1021

**1021 Foreign Body Forceps** .9mm (20g)

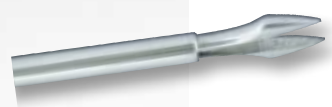
Reverse action basket style forceps with three gripping arms. Designed for grasping and removing foreign bodies. Reverse action ensures secure gripping of the foreign body during removal.



1022

**1022 Delicate Pick Forceps** .9mm (20g)

Small pick forceps with platform. Excellent for picking and grasping epiretinal membranes.



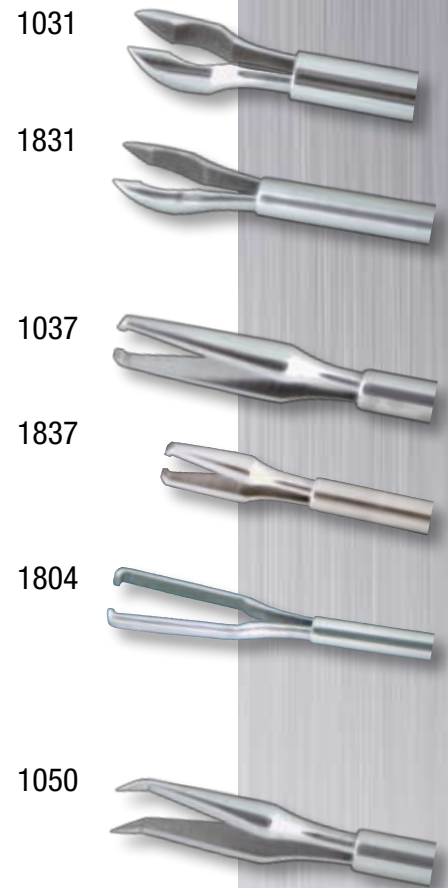
1662

**1662 Fine Gripping Forceps with Roughened Jaws** .9mm (20g)

Thin gripping forceps with pointed tips. Designed for peeling membranes from the retina. Roughened surface allows excellent grip strength.

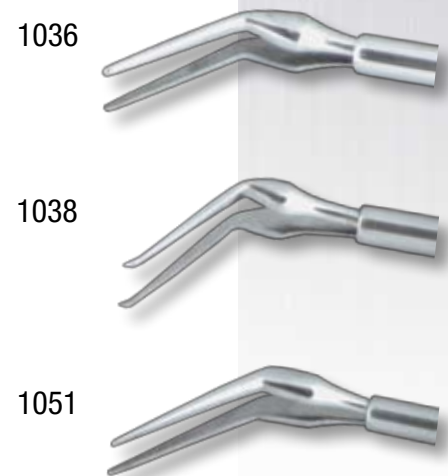
# Micro Forceps

- 1031 Offset Forceps** .9mm (20g)  
**1531 Offset Forceps** .6mm (23g)  
**1831 Offset Forceps** .5mm (25g)  
 Tip with platform is pointed to one side for precise grasping along retina surface. Allows excellent visibility and grip for ILM and delicate membranes.
- 1037 Fine Gripping Forceps** .9mm (20g)  
**1537 Fine Gripping Forceps** .6mm (23g)  
**1837 Fine Gripping Forceps** .5mm (25g)  
 Blunt tip forceps with raised platform at tip. Ideal for ILM peeling.
- 1504 End Grasping ILM Forceps** .6mm (23g)  
**1804 End Grasping ILM Forceps** .5mm (25g)  
 End grasping forceps with extremely thin jaws allow maximum visibility around and through the jaws during use. Raised platform for precise grasping.
- 1050 Naito ILM Forceps** .9mm (20g)  
**1350 Naito ILM Forceps** .9mm (20g) Titanium jaws  
 Pointed jaws form a pick when closed to enable picking of the ILM. Forceps allow picking and peeling with one instrument to reduce instrument exchanges. 1350 has blue titanium jaws for enhanced visibility.



# Subretinal Forceps

- 1036 Angled Long Gripping Forceps** .9mm (20g)  
 Delicate forceps with jaws angled 135 degrees 3mm from tip. Excellent for grasping subretinal membranes through a small retinotomy. Smooth, curved heel to reduce possible damage to choroid during use.
- 1038 Ducournau Fine Gripping Forceps** .9mm (20g)  
 Delicate forceps angled 120 degrees 3.5mm from the tip. Excellent for grasping subretinal membranes through a small retinotomy. Smooth, curved heel to reduce possible damage to choroid during use.
- 1051 Naito Subretinal Forceps** .9mm (20g)  
 Thin subretinal forceps angled 135 degrees 4.5mm from the tip. Allows deep access into the subretinal space.



*Photos not to scale*

# Membrane Instruments/Picks



2091    **2091 Membrane Peeler**    **.9mm (20g)**  
 Rounded, blunt instrument with notch for lifting the edge of epiretinal membranes.



2092    **2092 Membrane Spatula**    **.9mm (20g)**  
 Flat, thin blunt spatula angled 135 degrees, 4mm from the tip. Ideal for blunt dissection and delamination of membranes from the retina.



2093    **2093 Membrane Spatula/Knife**    **.9mm (20g)**  
 Flat, thin sharp spatula angled 135 degrees, 5mm from the tip. Ideal for dissection and excision of membranes from the retina.



2099    **2099 ILM Pick**    **.9mm (20g)**

**2100 ILM Pick**    **.6mm (23g)**

**2097 ILM Pick**    **.5mm (25g)**

2097    Pick for lifting an edge for ILM or other fine membranes.



# Backflush Handle



**200130 Backflush Handle (Passive)**  
 Lightweight titanium backflush handle with silicone reservoir allows passive aspiration with reflux capability. Standard luer lock connector allows use with any luer hub needle or cannula.

**200101 Reservoir Replacement (Passive)**  
 Reservoir replacement for passive backflush handle. Sterile 10 per box.

*Photos not to scale*



# Product Index

## 20g

1010	Vertical Scissors (90°)	.9mm
1014	Vertical Scissors (45°)	.9mm
1011	Straight Scissors	.9mm
1012	Curved Scissors	.9mm
1013	135 Degree Angled Scissors	.9mm
1035	Long Angled Scissors	.9mm
1016	Micro End Gripping Forceps	.9mm
1017	Side Gripping Forceps	.9mm
1018	Angled Forceps	.9mm
1019	Pick Forceps	.9mm
1020	Serrated Forceps	.9mm
1021	Foreign Body Forceps	.9mm
1022	Delicate Pick Forceps	.9mm
1662	Fine Gripping Forceps with Roughened Jaws	.9mm
1031	Offset Forceps	.9mm
1037	Fine Gripping Forceps	.9mm
1050	Naito ILM Forceps	.9mm
1350	Naito ILM Forceps	.9mm
1036	Angled Long Gripping Forceps	.9mm
1038	Ducournau Fine Gripping Forceps	.9mm
1051	Naito Subretinal Forceps	.9mm
2091	Membrane Peeler	.9mm
2092	Membrane Spatula	.9mm
2093	Membrane Spatula/Knife	.9mm
2099	ILM Pick	.9mm

## 23g

1514	Vertical Scissors (45°)	.6mm
1511	Straight Scissors	.6mm
1512	Curved Scissors	.6mm
1513	Curved Scissors (long)	.6mm
1504	End Grasping ILM Forceps	.6mm
1516	Micro End Gripping Forceps	.6mm
1530	Pick Forceps	.6mm
1520	Serrated Forceps	.6mm
1531	Offset Forceps	.6mm
1537	Fine Gripping Forceps	.6mm
2100	ILM Pick	.6mm

## 25g

1814	Vertical Scissors (45°)	.5mm
1811	Straight Scissors	.5mm
1812	Curved Scissors	.5mm
1813	Curved Scissors (long)	.5mm
1804	End Grasping ILM Forceps	.5mm
1816	Micro End Gripping Forceps	.5mm
1830	Pick Forceps	.5mm
1820	Serrated Forceps	.5mm
1831	Offset Forceps	.5mm
1837	Fine Gripping Forceps	.5mm
2097	ILM Pick	.5mm



For more information or to place an order, please contact us:



**MedOne Surgical, Inc.**

670 Tallevast Road, Sarasota, FL 34243 USA

TEL: 941.359.3129 Fax: 941.359.1708

**Toll Free: 866.633.6631**

**[www.MedOne.com](http://www.MedOne.com)**