

**VINNOA5**

Deliver Simplified Clinical Solution Anywhere



**VINNO**

**VINNO Technology (Suzhou) Co., Ltd.**

5F, A Building, No.27 Xinfu Rd, Suzhou Industrial Park, 215123, China

Tel: +86 512 62873806

Fax: +86 512 62873801

Email: [vinno@vinno.com](mailto:vinno@vinno.com)

Website: [www.vinno.com](http://www.vinno.com)

VINNO reserves the rights to revise the technical specifications if needed.



**PREMED PHARMA KFT.**

**CÍM** 2040 Budaörs, Gyár u. 2.

**TELEFON** 06 23 889 700

**FAX** 06 23 889 710

**E-MAIL** [info@premedpharma.hu](mailto:info@premedpharma.hu)

**WEB** [www.premedpharma.hu](http://www.premedpharma.hu)

**VINNO**

Enhance your patient care with VINNO A5. With its compact design, simplified work flow and high image quality, it can deal with any clinical challenges wherever needed.



## Multi-science Applications

- » Height adjustable trolley provides comfortable view height.
- » Noiseless design provides a relaxed and peaceful atmosphere.
- » Fast boot feature ensures starting scanning at any time.
- » Built in battery with long lasting time provides confidence at critical moments.
- » Compact and light design offers flexible mobility.
- » Fashionable and durable trolley case relieves you from cluttered environments.







## Simplified Workflow



**Quick Navigation Bar**-Fast long page browsing by moving the trackball after click the interested area.  
**Back ICON**-Return to the top of the long page with only one click.



**Fast Setting Area**-Click the right corner of the title bar to adjust monitor brightness under scanning status.

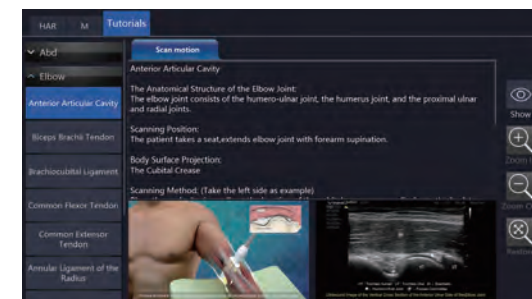


**Simple UI**-Select preset directly without reiterative page turning.  
**Magic Drag and Drop**-Adjust the sequence of preset easily by Magic Drag and Drop operation.

## Versatile Clinical Tools

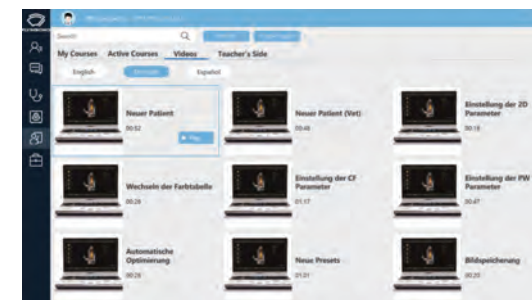


### High Efficient Connectivity



### Onboard Scan Coach

Innovative scan plane reference tool displays reference images, animations and schematics during live scanning.



### Online Education

Join in VINNO's Flyinso group to share your insights and study continuously in doctor's community.

## Beyond Your Expectation



Physical keyboard for fast information input



Multi-functional handle for quick stand when needed



Two probe ports

## Wide Range Of Transducers



### A2-5C

Applications: Abdomen, OB/GYN, Urology



### A4-12L

Applications: Vascular, Small parts, MSK, Nerve



### A1-4P

Applications: Cardiology, Abdomen



### A4-9E

Applications: OB/GYN, Urology



### A3-6D

Applications: OB/GYN, Abdomen, Urology

## High Quality Images

