

# Compact Touch<sup>®</sup> STS UBM<sup>™</sup>

## TECHNICAL SPECIFICATIONS

### UBM PROBE

|                             |                                 |
|-----------------------------|---------------------------------|
| Transducer frequency:       | 50 MHz                          |
| Linear transducer movement: | exploration width 16 mm (0.63") |
| Focus:                      | 9 to 11 mm (0.35" to 0.43")     |
| Axial resolution:           | 35 µm                           |
| Lateral resolution:         | 60 µm                           |
| Adjustable gain:            | 20 to 110 dB                    |
| Time Gain Control (TGC):    | 0 to -30 dB                     |
| Dynamic range adjustment:   | from 20 to 90 dB                |

### DATA MANAGEMENT

Built-in physician and patient database  
 Exportation of still images and video sequences  
 Customizable digital and printed reports  
 EMR compatible  
 Compatible with PC and USB video printers  
 Storage of still images and video sequences (up to 10 second duration) on hard disk  
 Image post-processing tools: calipers, areas, angles, markers, comments

### GENERAL INFORMATION

|   |  |
|---|--|
| Back-lit LCD color touch screen monitor |  |
| Definition:                             | 1024 x 768 x 256 grey levels   |
| <i>Electrical requirements</i>          |  |
| Power supply:                           | 100-240 Vac ±10% single phase without earth                                |
| Frequency:                              | 47/63 Hz   |
| Power:                                  | 70 VA max  |
| <i>Features</i>                         |  |
| Overall dimensions:                     | 37.5 cm (W) x 10 cm (D) x 27 cm (H)<br>14.76" (W) x 3.94" (D) x 10.63" (H) |
| Touch screen dimensions:                | 10.4" - 21 cm (W) x 16 cm (H)<br>8.3" (W) x 6.3" (H)                       |
| Weight:                                 | 4.28 Kg (9.26 lb)  |
| Ports:                                  | 2 USB, 1 ethernet  |

*Peripherals and accessories*  
 Keyboard\* with USB  
 Mouse with USB  
 External PC printer Windows® 7 (32 bits) compatible\*  
 Video printer with USB connection\*  
 Footswitch  
 Carrying case  
 Connection to medical servers via EMR

(\* Option)

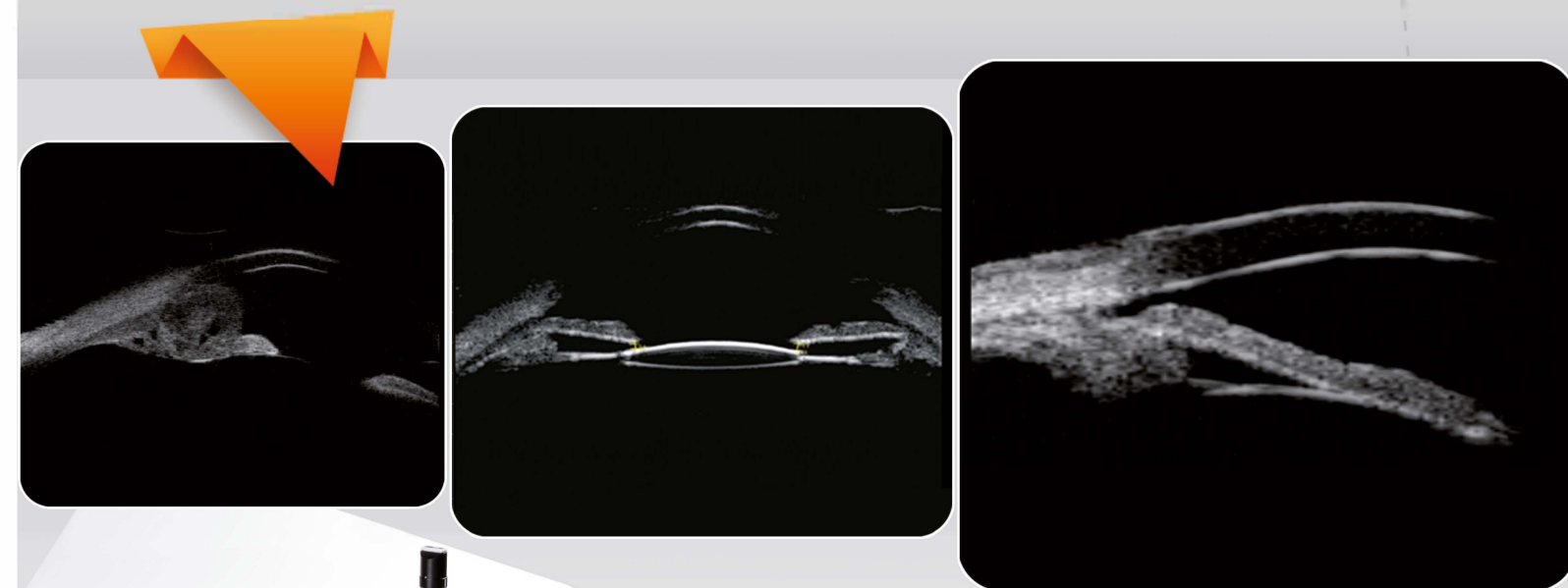
Specifications are subject to change without notice.

©2013.Quantel Medical, Compact Touch STS UBM<sup>™</sup> is a registered trademark of Quantel Medical. All rights reserved.



# Compact Touch<sup>®</sup> STS UBM<sup>™</sup>

## Ultrasound Biomicroscope



[www.quantel-medical.com](http://www.quantel-medical.com)



PREMED PHARMA KFT.  
 CÍM 2040 Budaörs, Gyár u. 2.  
 TELEFON 06 23 889 700  
 FAX 06 23 889 710  
 E-MAIL [info@premedpharma.hu](mailto:info@premedpharma.hu)  
 WEB [www.premedpharma.hu](http://www.premedpharma.hu)



ISO 9001-13485

XE CT0UCHSTS-UBM BC4 AN 0413 - Anwork by: [www.overscan.it](http://www.overscan.it)

**Headquarters**  
 Quantel Medical  
 11, rue du Bois Joli - CS40015  
 63808 Cournon d'Auvergne - FRANCE  
 Tel: +33 (0)4 73 745 745  
 Fax: +33 (0)4 73 745 700  
 E-mail: [contact@quantel-medical.fr](mailto:contact@quantel-medical.fr)

**North America**  
 Quantel USA  
 601 Haggerty Lane  
 Bozeman, MT 59715 - USA  
 Tel: +1 877 782 6835  
 Fax: +1 406 522 2005  
 E-mail: [info@quantelmedical.com](mailto:info@quantelmedical.com)

**Representative Offices**  
 Thailand, Chiang Mai  
 Brazil, Rio De Janeiro



# Compact Touch **STS UBM™**

Quantel Medical's cutting edge technology in ultrasonography has brought constant and multiple innovations to ultrasound specialists worldwide since **1993**.

The Compact Touch STS UBM™ is the portable ultrasonic biomicroscope (UBM) from Quantel Medical for imaging the eye from the cornea to the lens.

In comparison to optical technologies, ultrasound can travel through opaque media and pigmented tissues to produce high quality images of ocular structures, especially behind the iris. The angle, ciliary bodies, crystalline lens and IOL are easily visualized with the Compact Touch UBM™.

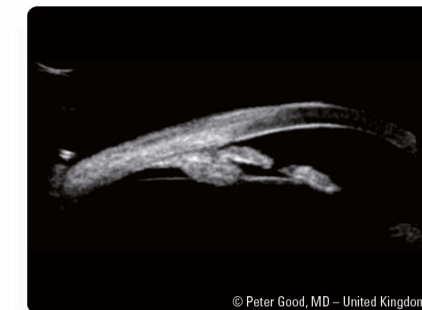
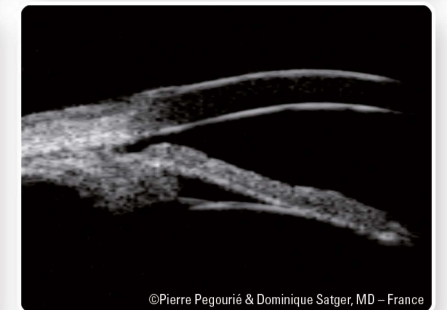
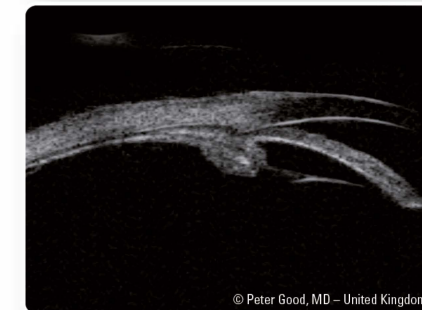
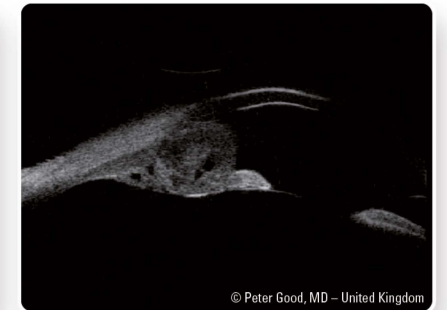
## Ultrasound Biomicroscope

### ■ Compact Touch STS UBM™ and Glaucoma

The Compact Touch STS UBM™ is the diagnostic tool able to qualify and quantify the angle closure in glaucoma patients.

It provides excellent viewing of the structures located behind the iris leading to a better understanding of the various causes of angle closure such as pupil block, iris plateau, tumors and cysts.

UBM examination assists the physician to make a more informed treatment plan.



### ■ Compact Touch STS UBM™ and Post Treatment Evaluation

Compact Touch STS UBM™ is also used for surgical prognostic in case of filtration surgery.

Trabeculectomy filtering blebs and tube shunts can easily be visualized.

In post iridotomy, UBM imaging is also used to assess the treatment efficiency.

### ■ Compact Touch STS UBM™ and Refractive Surgery

For anterior chamber IOLs, Compact Touch STS UBM™ allows the viewing of the entire anterior chamber in one single scan.

The anatomy of the anterior chamber can be easily checked and the angle to angle measurement easily performed.

Consider the Compact Touch STS UBM™ for sulcus to sulcus measurements prior to phakic IOL implantation.

The optional STS module allows an automatic measurement of the sulcus-to-sulcus, lens curvature and anterior chamber depth.

ICL nomograms are available to pre-visualize the post-operative position. It helps determining the appropriate sizing, selecting the most suitable ICL and improving the post-operative results.



### ■ Ease of Use

The Compact Touch STS UBM™'s user friendly software offers quick access to all functions thanks to easily identifiable icons.

Still images and video sequences can easily be reviewed in order to select the best scan.

The software includes an eye diagram allowing the user to document the probe orientation and accurately label echograms.

The structures adjacent to the probe are continuously displayed on the right hand side of the screen.

No more limitation of use related to sterility, comfort and safety, Compact Touch STS UBM™'s lightweight probe is compatible with the Clearscan® cover. The patient can be examined in a seated position.



### ■ Image Quality

Quantel Medical's proprietary linear scanning and automotive technology allows for maximized perpendicularity to tissues, throughout the examining field.

The greater signal intensity provides superior imaging of the anterior chamber and other ocular structures.

Images are displayed on a high resolution touch screen.

### ■ Mobile Versatility

Weighing less than 5 kgs (11 lbs), Compact Touch STS UBM™ is easy to transport.

The built-in patient and user databases provide unlimited access to information.

EMR compatible, Compact Touch STS UBM™ connects to any compatible software for data storage.

