

Frey



manufactured in
European Union



Imaging System

SLI-200 Digital Imaging System - Vizualize. Improve workflow. Share.

Frey SLI-200 provides unique quality with fully integrated design already at manufacture stage and does not require external PC. Implement efficient, high-level work flow and integration into clinical practice, with less complicated and more integrated device.

Stream to multiple screens

Stream images and videos across multiple devices. Frey SLI-200 allows you to collaborate with other health care professionals, share knowledge and discuss diagnosis, improve clinical outcomes in real time, easily. Ideal for general practices, educational and training institutions. Video streaming and photo sharing enhance clinical collaboration and education.

Stunning AMOLED tech

AMOLED screen provides superb image quality - better contrast, higher brightness, fuller viewing angle, a wider colour range to capture even the greatest detail of the eye. AMOLED consume less power, enables Frey to simplify the unique design that is ultra-thin with better durability.

Work wirelessly

Use fast, stable and reliable Wi-Fi AC or Bluetooth 4.2 to connect all your devices. Simplify workspace and improve clinical workflows.

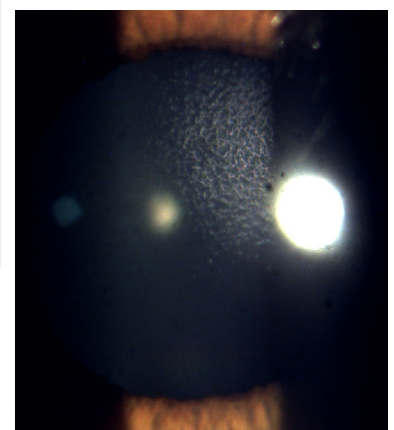
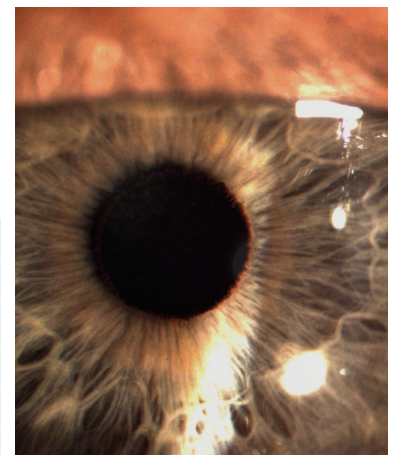
Out of the box & stand alone

Work independently and efficiently. Frey SLI-200 does not require external PC or any other device to operate. All cables remain hidden in an ergonomic and minimalistic design. The eye lighting system, which can be controlled using the knob built into the lamp base, is included.

Large & reliable internal storage

Result and image management is an essential part of doctor's workflow. SLI-200 simplifies and speeds up the work with 128GB internal storage. Gather a large number of heavy files. Select, the most interesting photos and sent them to you smartphone - without cluttering it.

Device type	SLI-200 Imaging System
Screen	AMOLED 5' touch screen
Sensor	CMOS Image Sensors with a 3.45 µm Pixel
Memory	128 GB internal high endurance flash storage
Image processing technology	HDR, Global Shutter Function
Photo resolution	2048x1536 px
Movie resolution	960x720 px
Communication	Bluetooth 4.2, Wi-Fi AC
Depht of colour	do 12 BPP
Other features	Video streaming to multiple devices
	Photo & video capture
	Automatic L/R eye detection



PREMED PHARMA KFT.
 CÍM 2040 Budaörs, Gyár u. 2.
 TELEFON 06 23 889 700
 FAX 06 23 889 710
 E-MAIL info@premedpharma.hu
 WEB www.premedpharma.hu