

Stellaris Elite™

Vision Enhancement System



BUILT FOR THE NEXT GENERATION.
BUT READY FOR THIS ONE.

BAUSCH + LOMB

#WelcomeToTheNextChapter

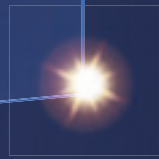


With a combination of leading-edge technologies, the all-new **Stellaris Elite™** is designed to deliver optimised control and efficiency to a wide range of cataract and retina procedures.

And only Stellaris Elite™ offers the next-generation vitreous liquefaction and aspiration with the Vitesse™ hypersonic vitrectomy system.

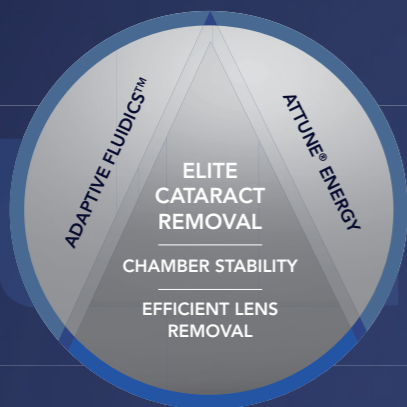
Ready to grow and evolve as technology advances, **Stellaris Elite™** has the **built-in capability** for multi-use environments, now and as future practice needs arise.

- Maximizes immediate and long-term return of interest, with cataract and retina capabilities in a single platform
- Platform technology built to seamlessly handle future updates and enhancements



REIMAGINE PRECISE CONTROL

Adaptive Fluidics™ integrates automated aspiration control with Dynamic Infusion Compensation to create the new standard for **stabilizing** intraocular pressure, creating a responsive and controlled surgical environment.

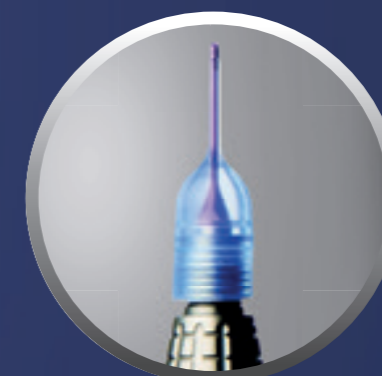


#Welcome

RETHINK ADVANCED PERFORMANCE

Attune® energy management works synergistically with the chamber stability and vacuum efficiency of Adaptive Fluidics™ to deliver low power, emulsification with a six crystal 28.5 kHz handpiece frequency.

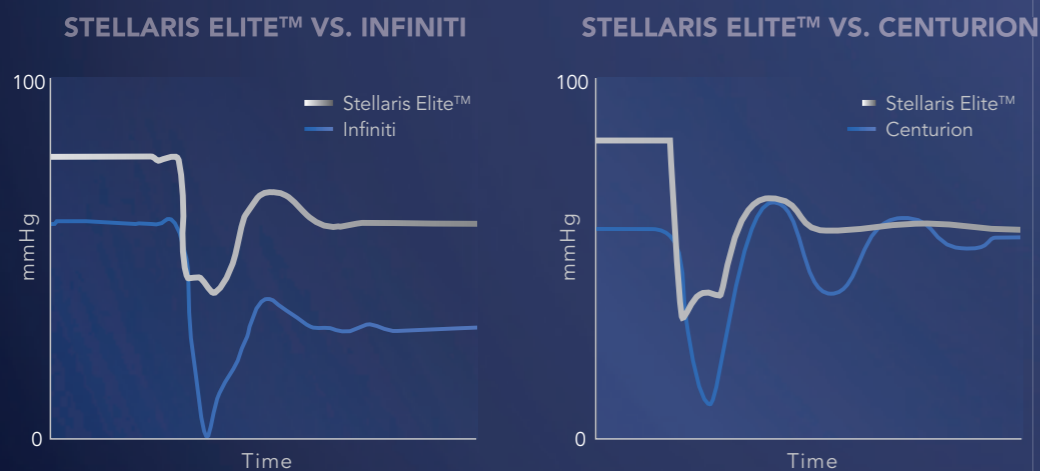
- Design balances mechanical cutting with acoustic cavitation
- Full 150 micron stroke length, longitudinal cutting action



CHAMBER STABILITY

Dynamic Infusion Compensation technology compensates for changes in fluid flow, to improve control and to maintain a stable chamber. After the surgeon sets a preferred infusion pressure, it works systematically by:

- **Monitoring:** Adaptive Fluidics™ continuously tracks vacuum flow rate
- **Compensating:** The system automatically adjusts infusion pressure, to maintain anterior chamber stability



Stellaris Elite™ with Adaptive Fluidics™ minimizes post-occlusion surge delivering a lower variation in pressure than Infiniti.¹

Stellaris Elite™ with Adaptive Fluidics™ delivers an effective post-occlusion chamber pressure that's three times higher than Centurion with Active Infusion, resulting in reduced post-occlusion surge.²

Vacuum = 400 mmHg Flow = 420 c/min Infusion Pressure = 60 mmHg

1. Data on file.
2. Data on file.

#Welcome

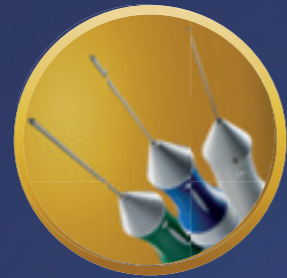
Liquefaction

VITRECTOMY, VERSATILE CUTTING OPTIONS

With a variety of cutting options, Stellaris Elite™ adapts to a wide range of procedural needs.

SINGLE-PORT VITRECTOMY CUTTER

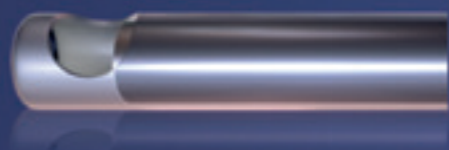
- Available in 20, 23, and 25 gauge
- New 7,500 cpm cut rate, for efficient vitreous removal
- Cuts only in the forward position



CUT 1



NO CUT



BI-BLADE™ VITRECTOMY CUTTER

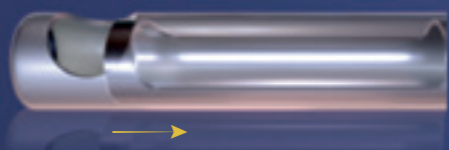
- 25 and 27ga with cut rate up to 15,000 cpm
- Dual-port design, for consistent flow rate and reduced retinal traction
- Cuts in both forward and backward positions, for two cuts per cycle



CUT 1



CUT 2



VITESSE™ HYPERSONIC VITRECTOMY

Exclusive to Stellaris Elite™, the Vitesse™ hypersonic vitrectomy system represents a new approach to vitreous removal (patented technology).

- **Optimized Control and Precision:** HyperV technology creates a localized tissue liquefaction zone, at the edge of the port
- **Consistent Flow:** OpenPort design is 100% open, 100% of the time
- **Unobstructed Aspiration:** Novel single-lumen design



HOW IT WORKS



- 1 HyperV technology creates a tissue liquefaction zone at edge of the port
- 2 Vitreous is aspirated through the open port
- 3 Liquefied vitreous is aspirated through the unobstructed lumen

LOW

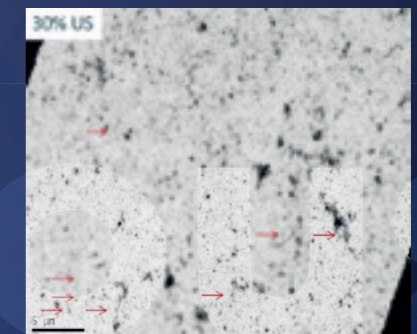
ELECTRON MICROSCOPY FINDINGS IN HUMAN VITREOUS*

In cadaver eye experimental study, Hypersonic liquefaction results in more fragmentation of the vitreous collagen fibers.

PNEUMATIC CUTTERS



VITESSE HYPERSONIC LIQUEFACTION



*Pastor-Idoate S, Bonshek R, Irion L, et al. Ultrastructural and histopathologic findings after pars plana vitrectomy with a new hypersonic vitrector system. Qualitative preliminary assessment. Vavvas DG, ed. PLoS ONE. 2017;12(4):e0173883. doi:10.1371/journal.pone.0173883.

Built For The Next Generation

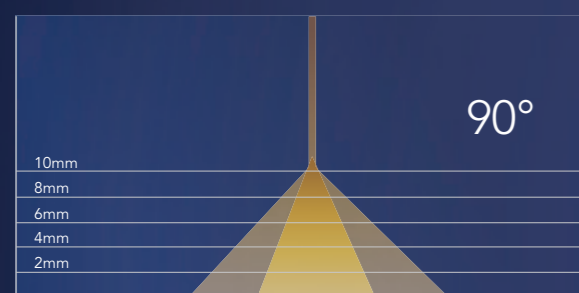
COMPREHENSIVE VISUALIZATION TECHNOLOGIES

Stellaris Elite™ offers a dedicated combination of light source, fiber optics, and light filtering technologies. Collectively, they enable optimized visualization, differentiated viewing options, and surgical control.

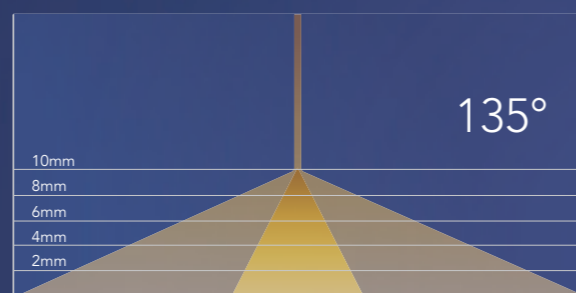
OPTIMIZED ILLUMINATION

- Bright Xenon light is specifically designed for small-gauge vitrectomy
- Supports fiber optic add-ons as small as 29ga
- Numerous specialized illumination options including chandeliers, illuminated instruments, and illuminated laser probes

FEATURES PACKS WITH BOTH MIDFIELD AND DIFFUSE WIDE FIELD LIGHT PATTERNS



Midfield Illumination Pattern



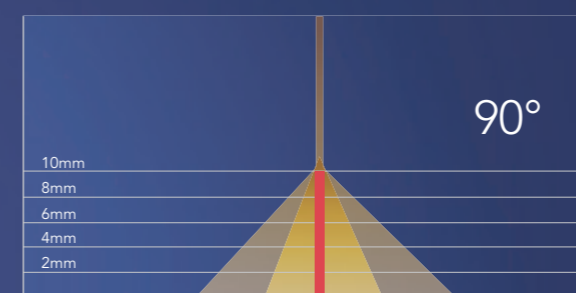
Widefield Illumination Pattern

EXPANDED ACCESS

- A comprehensive portfolio of high-quality laser probes
- Available in 20, 23, 25 and 27ga
- Patented directional laser probes feature a fixed fiber together with a moving shaft, for 90-degree curve actuation
- Illuminated directional laser probe delivers midfield light patterns and enables unassisted scleral depressions



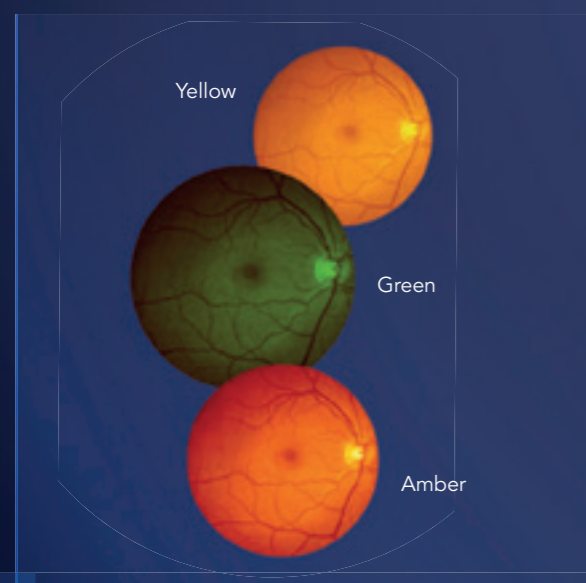
LASER PROBE ILLUMINATION PATTERN



Midfield Illumination Pattern

Available in Directional, Straight, and Curved Format

DIFFERENTIATED VIEWING



- Proprietary color filters
 - Yellow
 - Green
 - Amber
- Filters may be used as an augmentation or an alternative to intraoperative dyes



Ready For

This One

EASE-OF-USE

WIRELESS DUAL LINEAR FOOT PEDAL

Rapid response and control in changing conditions.

- Enables management of both pitch and yaw planes
- Integrated movements provide simultaneous control of irrigation, ultrasound, and aspiration
- Irrigation on-off is now available on the yaw planes



3 MINUTE SET-UP

Single touch automated Prime and Tune for an easy and quick setup.

Want to make more of your valuable time and resources?

Stellaris Elite™ can help.

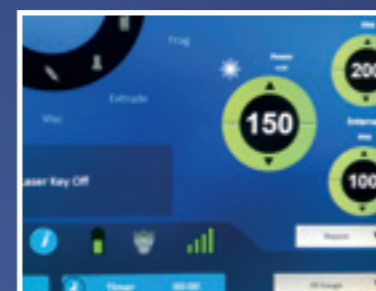
Stellaris Elite™ is designed for both Cataract and Vitreoretinal surgical practice.

OR-Optimized for you and your staff

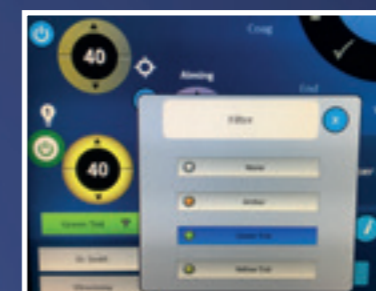
- Small OR footprint
- Wireless foot pedal
- Easy to set-up, priming and tuning of tubing and handpieces
- Preassembled, ready-to-use cassette/tubing **with a new configuration**
- Designed to decrease turnaround time
- Wide range of accessories, handpieces and Storz and Synergetics® Ophthalmic Instruments
- Stellaris Elite™ is expandable to perform vitreoretinal procedures too

ENHANCED GRAPHIC USER INTERFACE FOR IMPROVED EASE-OF-USE

INTEGRATED LASER CONTROL



DROP-DOWN, COLOUR CODED MENU FOR LIGHT FILTER SETTINGS



ONE STEP ERROR RESOLUTION



Clarity for surgeons

- Integrated laser controls
- Status, settings displayed on home screen
- Drop-down menus for each phase
- Colour coded drop down menus for light filter settings
- Voice confirmation on added phases
- Password protected surgeons settings

Intuitive for OR staff

- Easy learning curve
- Simplified layout with larger buttons and improved readability (contrast, colour and icon size)
- One button tuning and priming
- One combined screen for all procedural needs
- Intuitive with 'show me the steps' tutorial animation
- 'One Step' error resolution

Ease

EaseOfUse

BAUSCH + LOMB PREMIUM RETINA PLATFORM

INSTRUMENTATION AND ACCESSORIES

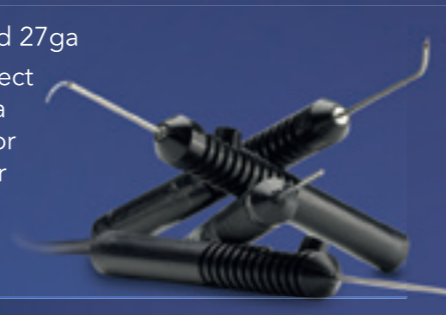
Pinnacle 360^o™ Instrumentation

- Full line of single use instrumentation
- Comfort and quality in a disposable instrument
- Extensive selection of glare free tips
- Ergonomic 360 actuation
- Color coded for easy gauge identification
- Myopic forceps (37 mm)



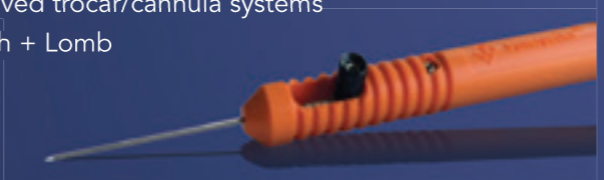
Laser Probes

- Curved, directional, and illuminated
- Patented directional technology aids instrument transfer and allows for a curve up to 90°
- Illuminated versions provide up to 62 lumens of light
- 20, 23, 25 and 27ga
- Directly connect to most retina lasers (adaptor is required for illumination)



Diamond Dusted Membrane Scraper (DDMS)

- Diamond dusted silicone design allows the instrument to brush the surface of the retina and elevate the membrane
- Retractable version to facilitate transfer through valved trocar/cannula systems
- Retractable and 27ga versions are unique to Bausch + Lomb
- 20, 23, 25 and 27ga



Chandelier

- Trocar with magnet / cannula is provided
- Variable depth design allows the surgeon to control the illumination pattern
- Available from 23ga to 29ga
- Adapts to most retina light sources (adaptor is required)



Cannulas

- Backflush can be used actively or passively
- Soft-tip cannula available in 23, 25 and 27ga
- Used with any vitrectomy platform
- Subretinal cannula available in 25ga with 41ga tip
- VFY cannula available in 23 and 25ga
- Silicone aspiration kit available in 23, 25 and 27ga



VITREORETINAL TAMPONADES

Oxane[®], Oxane[®] HD, DK-line[®], Okta-line[™] tamponades

Trusted high quality VR intraoperative and mid to long-term tamponades

Oxane[®]

- Prefilled syringe of Silicone Oil tamponade
- High interfacial tension
- For mid and long term tamponade

Oxane[®] HD

- Mixture of silicone oil and RMN3
- Heavier than water tamponade indicated in severe inferior and posterior breaks
- Potentially less risk of passage of silicone oil in the anterior chamber in phakic and pseudophakic eyes
- Medium range viscosity for easy automatic injection

DK-line[®], Okta-line[™]

- Purified PFCL for intraoperative use only in a range of VR surgery indications
- Adequate refractive Index for use perfect visibility of the bubble



STERILE SINGLE USE VITREORETINAL TRAYS

- Perform vitreoretinal surgeries with the Storz[®] Ophthalmic Instruments retinal line of 20, 23, 25 and 27 gauge instruments
- With forceps, bipolar erasers, picks and backflush handpieces, you will be able to assemble all essentials for your next retinal surgery in one tray

Visit www.strozeu.eu to assemble your individual Tray at home or on your mobile device.



SUPPORT & FACTORIES

COMPREHENSIVE SUPPORT FOR MAXIMUM PERFORMANCE

We provide extensive support service to ensure maximum performance of our products - our global teams of experts are only ever a phone call away.

Sales Personnel

Receive extensive product training so they can provide the highest level of support to you and your hospital staff.

Customer Services

Representatives are available 8 hours a day to answer all queries relating to orders, pricing, product availability, returns, deliveries and credit notes.

Global Logistics Capabilities

Our global network of service representatives and distributors ensure orders are dispatched around the clock, most within 24-48 hours.

Technical Service

Certified engineers receive hands-on product training, rigorous certification, tests and continuous training updates.

Predictive system management and maintenance: remote monitoring to prevent problems before they arise, enable software updates and back-up system data, with field engineers dispatched as needed.

Routine maintenance and inspections: prevent service, interruptions to keep equipment operating at peak efficiency.

Installation management: site assessment, installation review and process and equipment coordination – enable you to start generating revenue right away.




BAUSCH + LOMB
HEIDELBERG, GERMANY


BAUSCH + LOMB
SAINT-LOUIS, MISSOURI, USA

SYNERGETICS
O-FALLON, MISSOURI, USA

Support & Factories

 www.bauschsurgical.eu

 @BauschSurgical

 Bausch + Lomb Surgical

Please contact your Bausch + Lomb representative
for more information on Stellaris Elite™ platform.



BAUSCH + LOMB

®/™ are Trademarks of Bausch & Lomb Incorporated or its affiliates. All other product/brand names are trademarks of their respective owners. © 2017 Bausch & Lomb Incorporated.